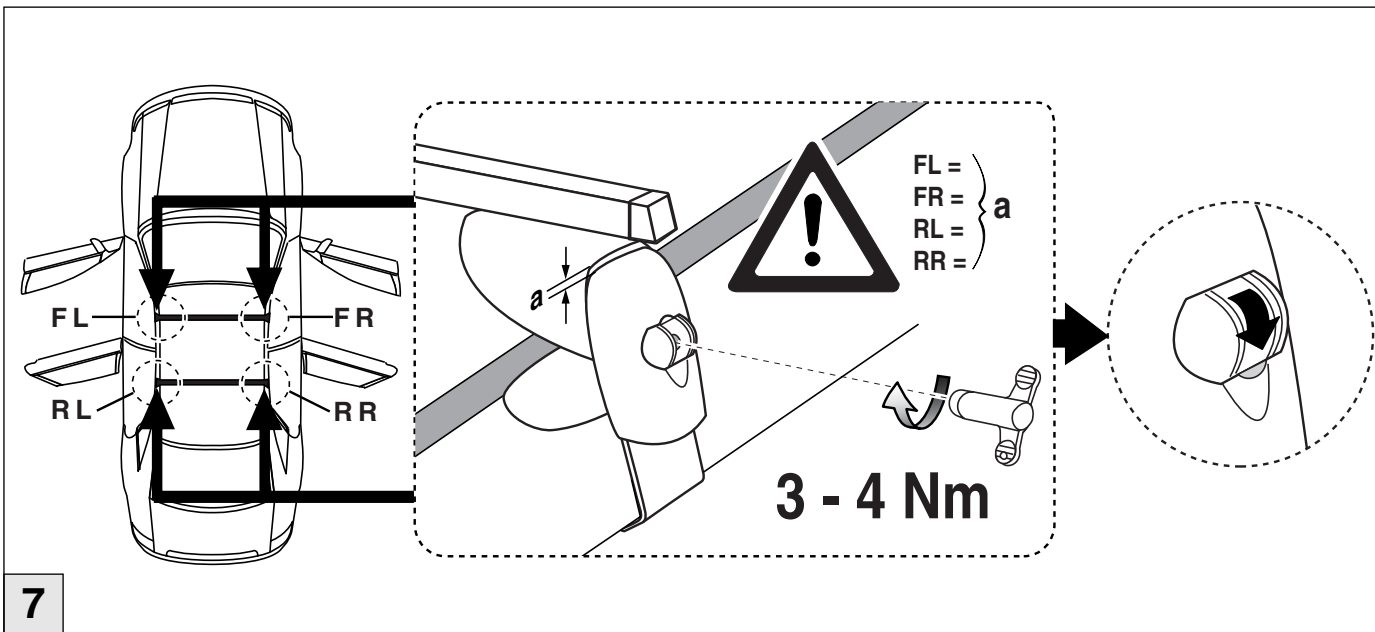
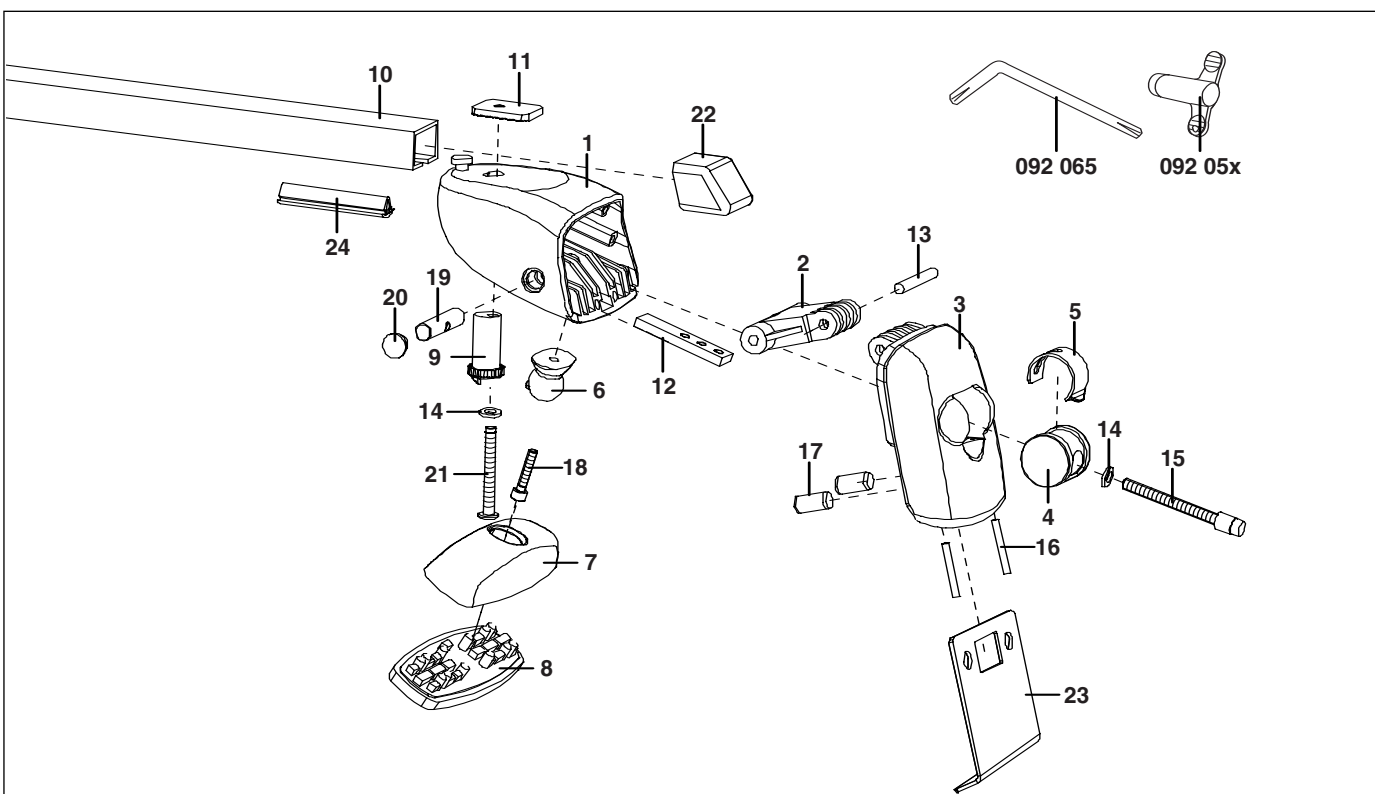


# Atera® SIGNO

Opel  
Agila 2000-



7



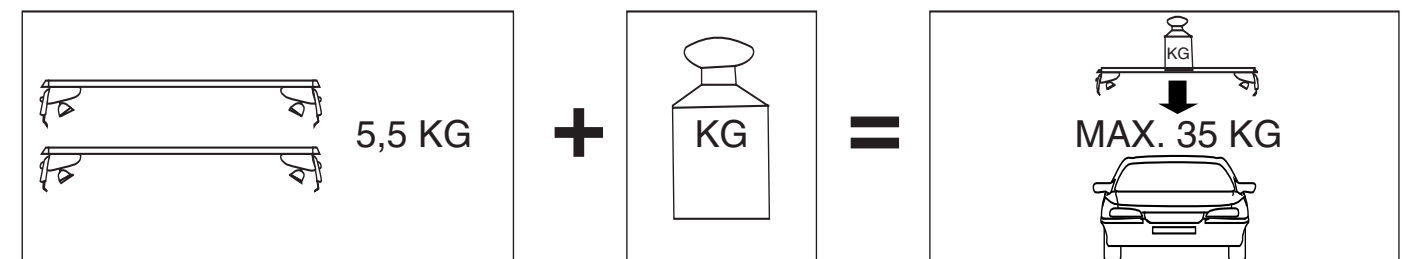
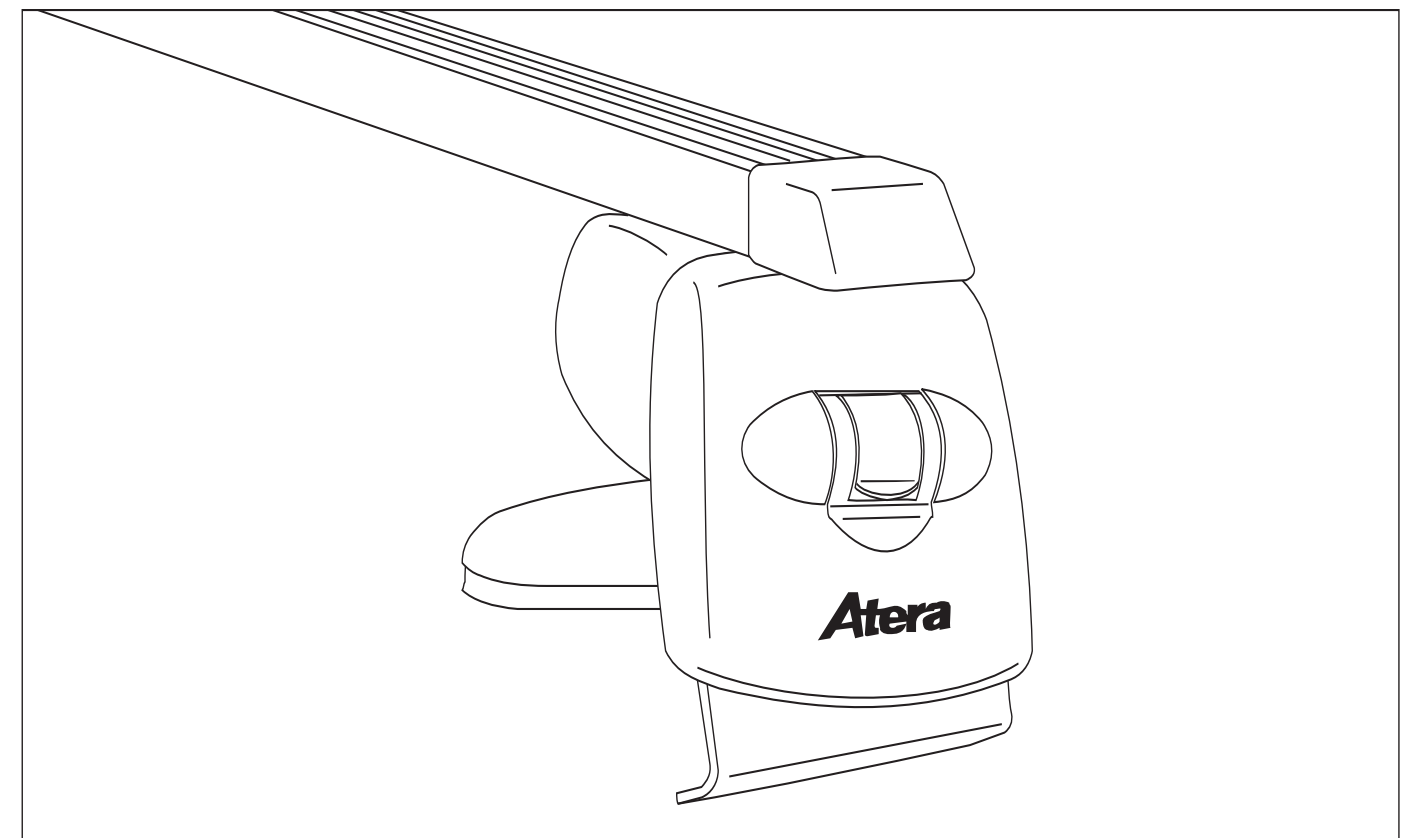
1- 092 034	7- 092 036	13- 087 657	19- 087 643
2- 092 040	8- 092 038	14- 087 886	20- 092 045
3- 092 078	9- 092 044	15- 087 65x	21- 087 656
4- 092 041	10- 073 122	16- 088 363	22- 088 184
5- 092 039	11- 087 478	17- 087 658	23- 093 138
6- 092 042	12- 087 659	18- 087 456	24- 092 043

8

# Atera® SIGNO

Opel  
Agila 2000-  
Part-No. : 044 005

- D** Benutzer-Information  
Vor Gebrauch des Trägersystems/Zubehörs sorgfältig und vollständig lesen!
- GB** User information  
Please read all instructions carefully before using the carrying system/accessories!
- F** Informations destinées à l'utilisateur  
Veuillez lire soigneusement toutes les instructions avant l'utilisation du système de porte-charges/des accessoires!
- NL** Gebruikerinformatie  
Voor gebruik van het dragersysteem en/of de accessoires zorgvuldig en volledig lezen!
- DK** Brugerinformation  
Læs betjeningsvejledningen grundigt igennem inden ibrugtagning.
- FIN** Ohjeita käyttäälle  
Lue ohje huolellisesti ja kokonaan ennen kattotelinejärjestelmän/lisävarusteiden käyttöönottoa.
- I** Informazioni per l'utente  
Prima dell'uso del sistema di trasporto/dell'accessorio leggere attentamente tutte le indicazioni!
- ES** Información para usuarios  
¡Leer cuidadosamente las instrucciones completas antes de usar el sistema portador / los accesorios!



**Atera®**  
MADE IN GERMANY

Eberhard Titte GmbH  
Postfach 2240  
D-68 92 Ravensburg  
Telefon 07 51 76 04-0  
Telefax 07 51 76 04-76  
E-Mail: fo@atera.de

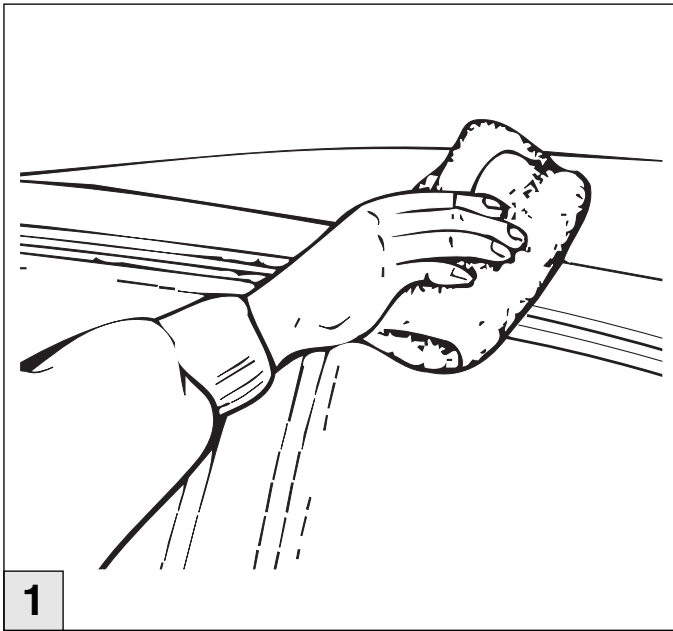
Produktion/Production

1	2	3	4	5	6	7	8	9	10	11	12
00	01	02	03	04	05	06	07	08			

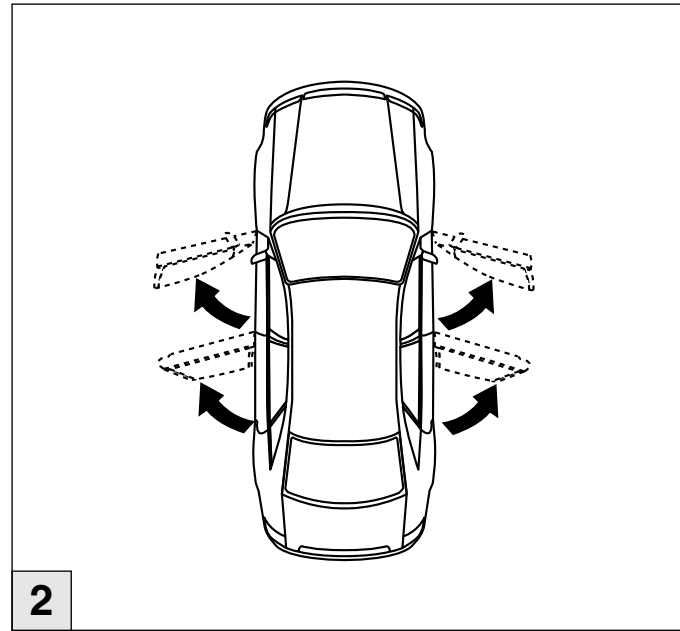


# Atera® SIGNO

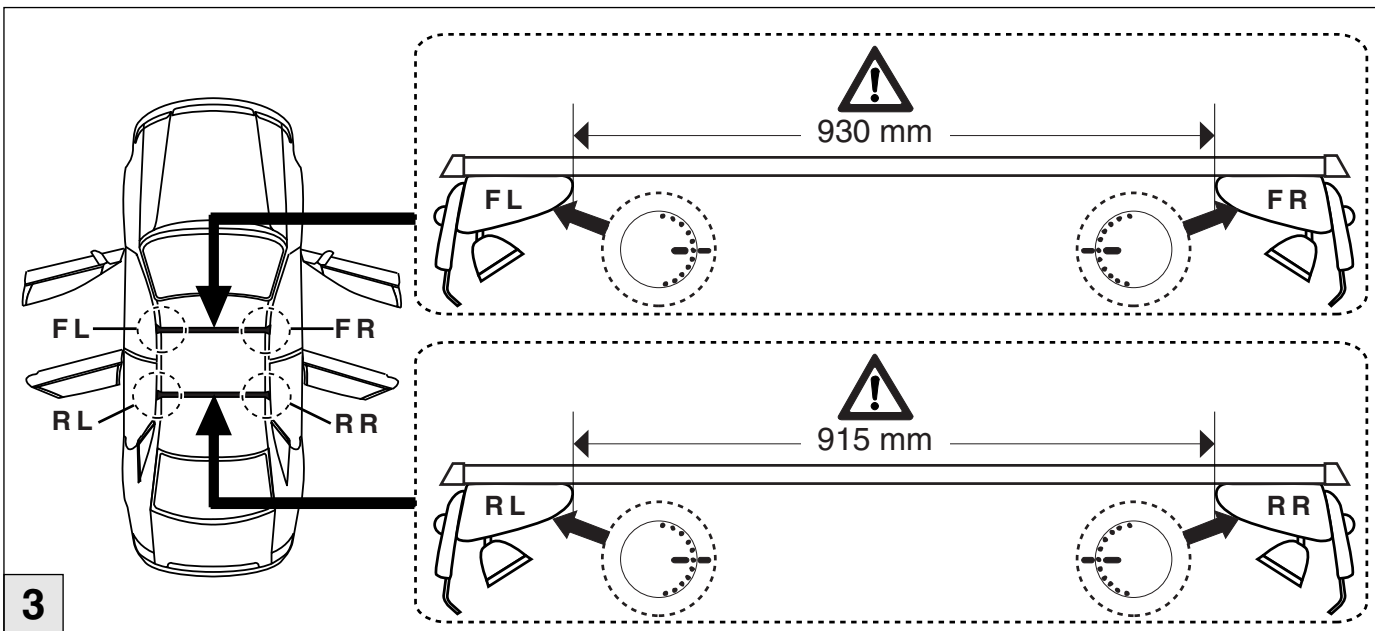
Opel  
Agila 2000-



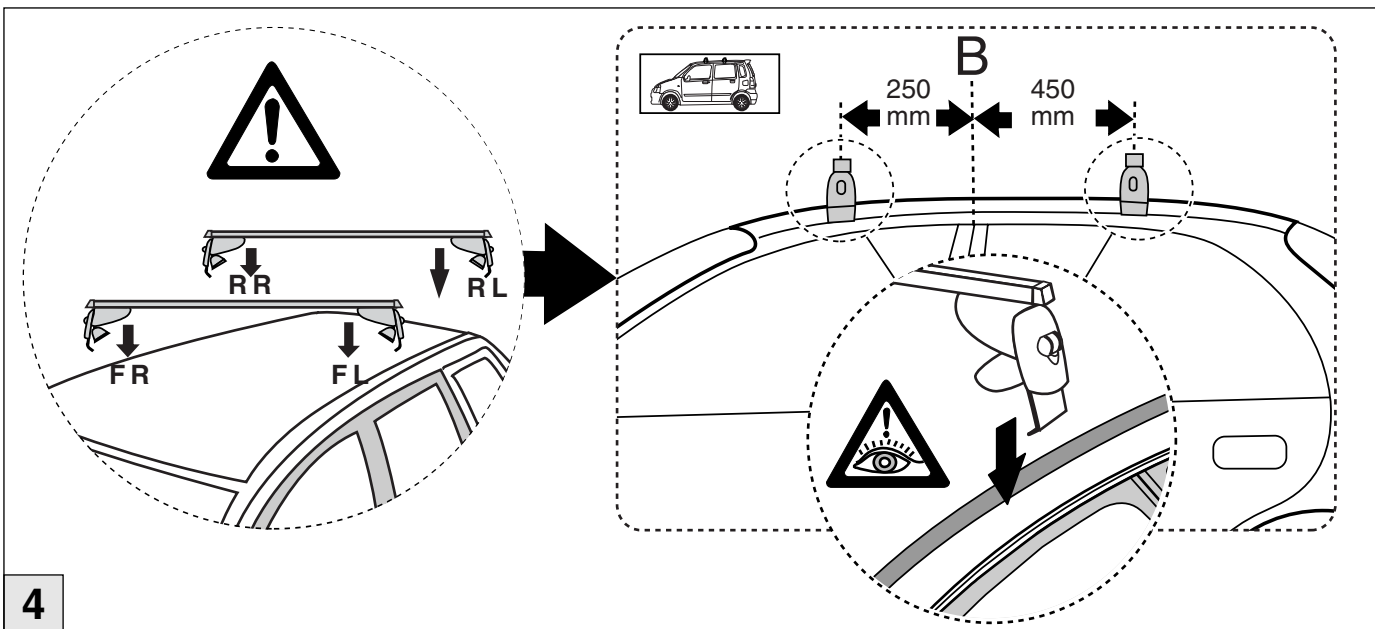
1



2



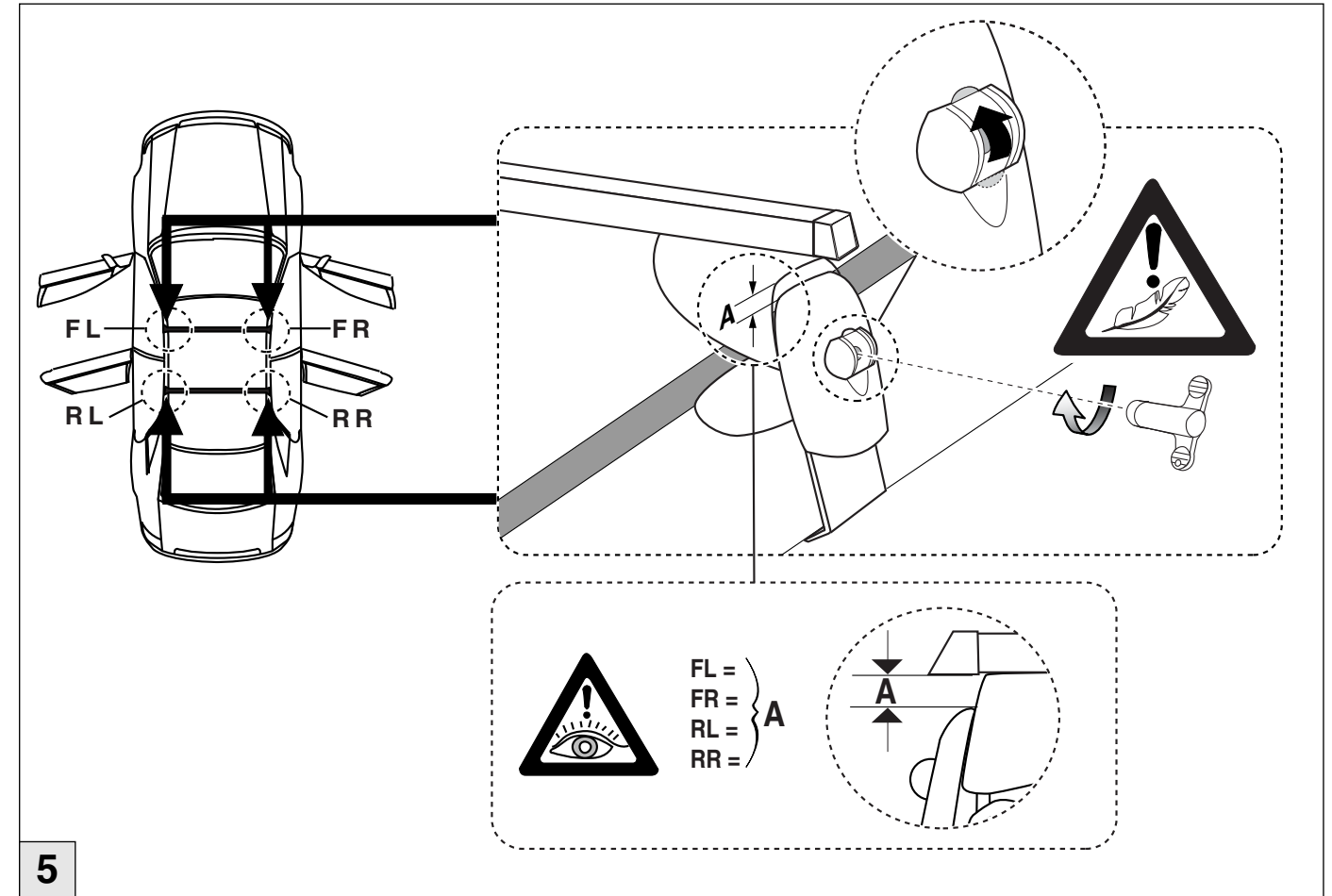
3



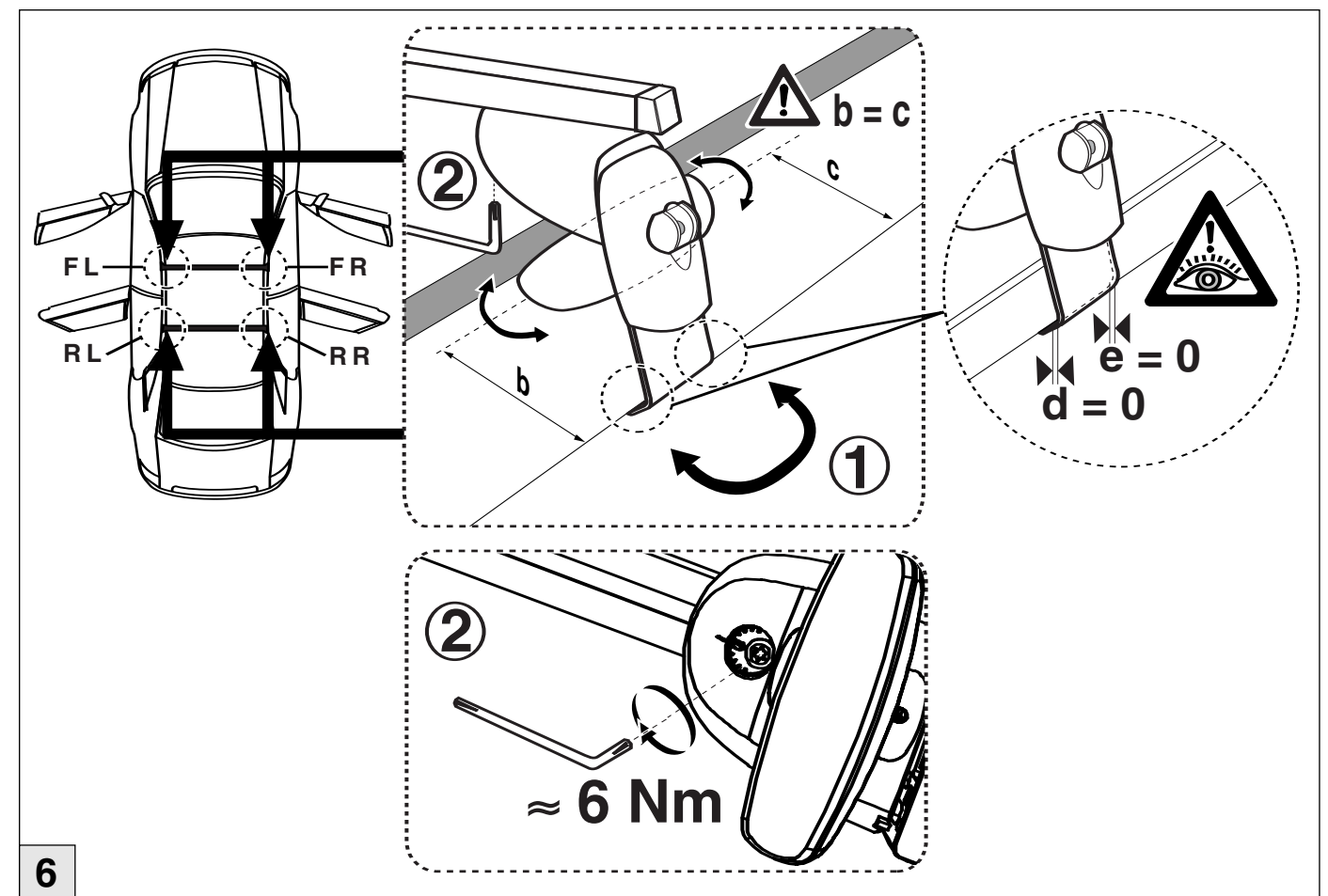
4

# Atera® SIGNO

Opel  
Agila 2000-



5



6